

# SUMMIT ENTERPRISE CONSOLE CONSTRUCTION DETAILS



78 John Glenn Drive  
Amherst, New York 14228  
(716) 691-8300

**CUSTOMER NAME**

INRACKS

**PROJECT**

SUMMIT ENTERPRISE

**DESCRIPTION**

SHOWN IN DRAWING  
48W SUMMIT ENTERPRISE CONSOLE

**DRAWN BY:** M McILROY | 11/24/2014

**SCALE** -

**SUMMIT ENTERPRISE  
CONSTRUCTION DETAILS**

**GENERAL NOTES**

THE INFORMATION CONTAINED IN THIS DRAWING IS THE SOLE PROPERTY OF INRACKS INC. ANY REPRODUCTION IN PART OR AS A WHOLE WITHOUT THE WRITTEN PERMISSION OF INRACKS INC. IS PROHIBITED.

ALL DIMENSIONS ARE IN INCHES

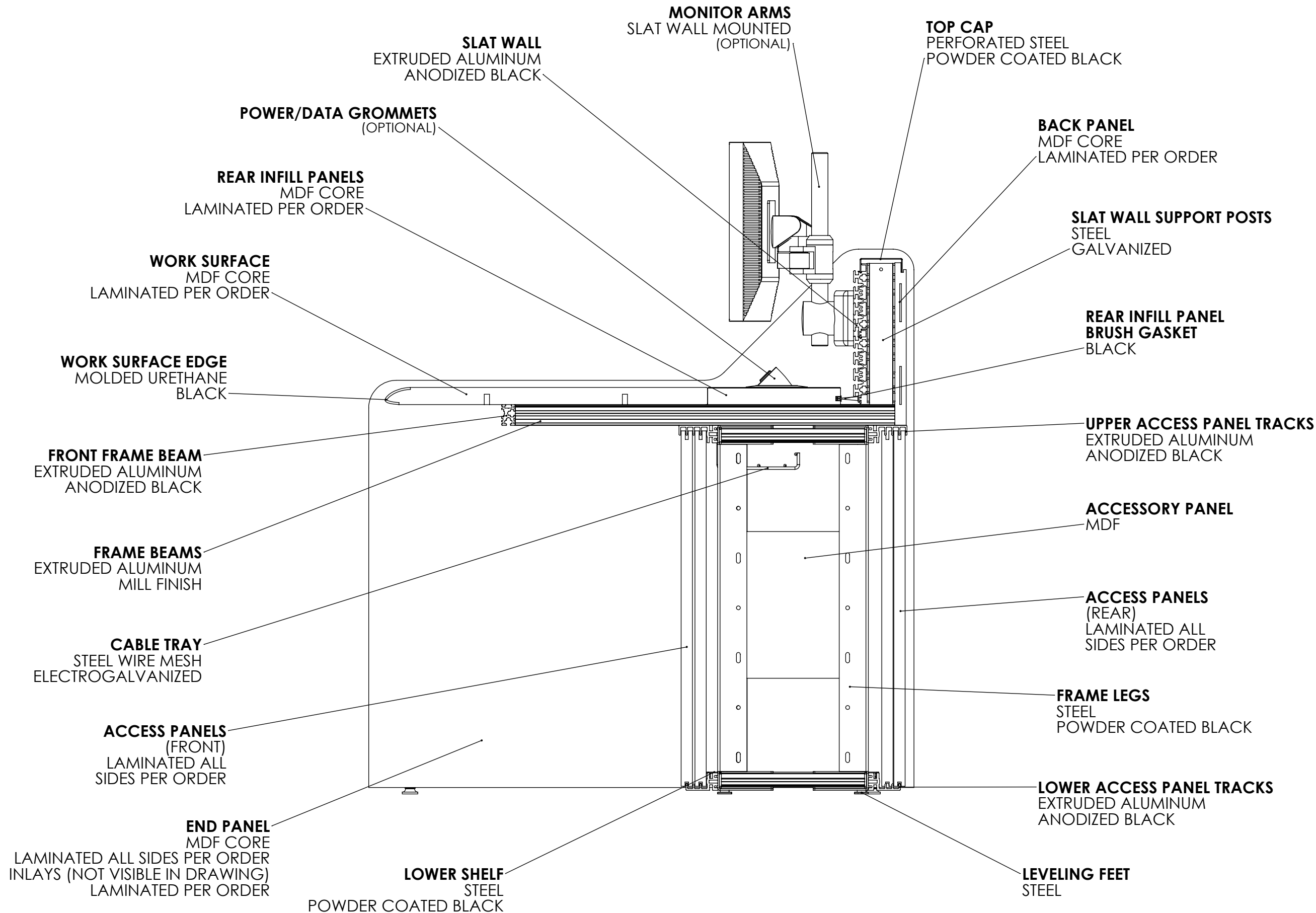
ANY QUESTIONS PLEASE ASK

TOLERANCES, UNLESS NOTED

0" - 12" = +/- 1/4"  
12" - 36" = +/- 3/8"  
36" - 120" = +/- 1/2"  
> 120" = +/- 1"

AUTHORIZED BY:

DATE



# SUMMIT ENTERPRISE CONSOLE

## INTERIOR DETAILS

PANELS REMOVED  
FOR CLARITY



78 John Glenn Drive  
Amherst, New York 14228  
(716) 691-8300

**CUSTOMER NAME**

INRACKS

**PROJECT**

SUMMIT ENTERPRISE

**DESCRIPTION**

SHOWN IN DRAWING  
48W SUMMIT ENTERPRISE CONSOLE

**DRAWN BY:** M McILROY | 11/24/2014

**SCALE** -

**SUMMIT ENTERPRISE  
INTERIOR DETAILS**

**GENERAL NOTES**

THE INFORMATION CONTAINED IN THIS DRAWING IS THE SOLE PROPERTY OF INRACKS INC. ANY REPRODUCTION IN PART OR AS A WHOLE WITHOUT THE WRITTEN PERMISSION OF INRACKS INC. IS PROHIBITED.

ALL DIMENSIONS ARE IN INCHES

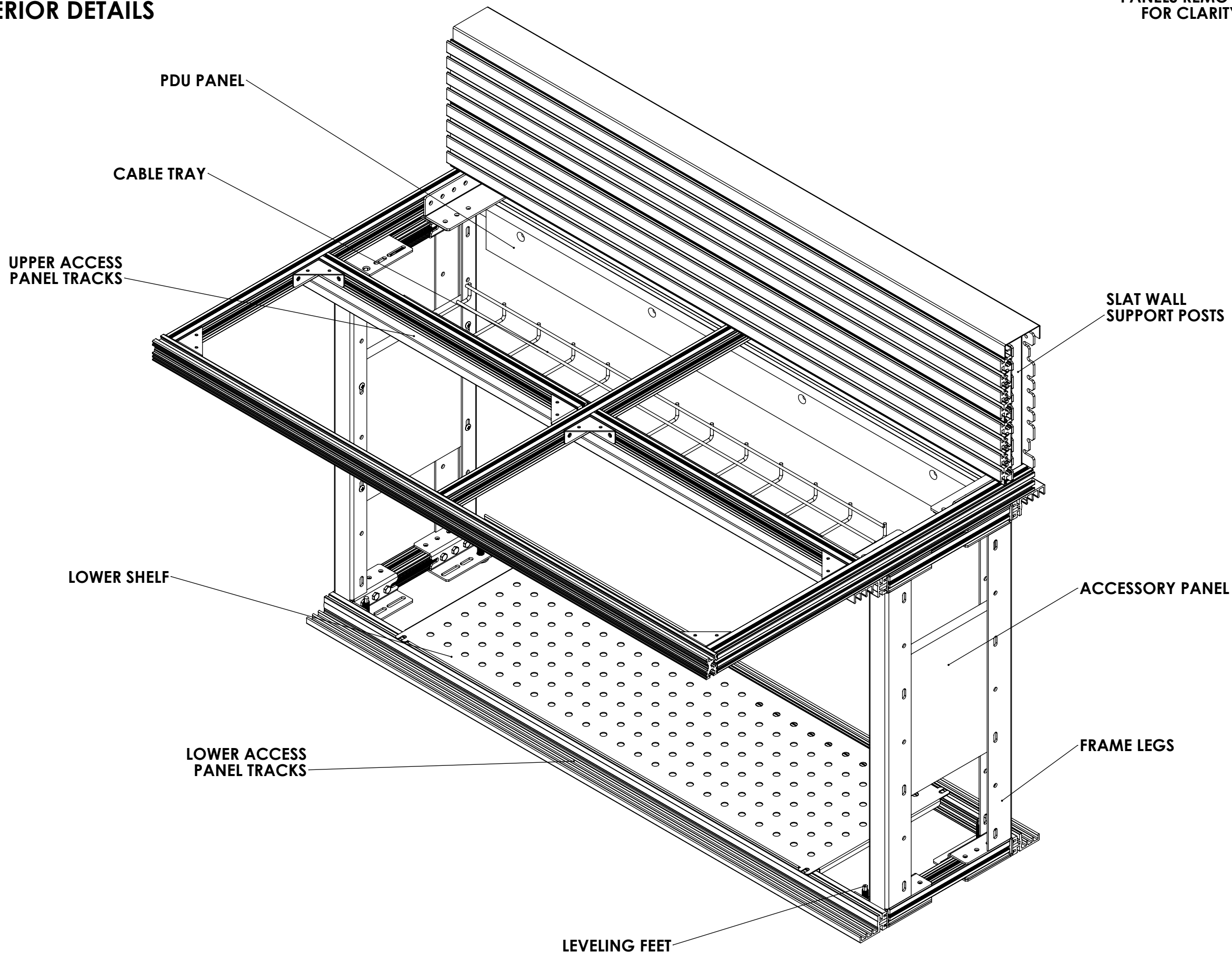
ANY QUESTIONS PLEASE ASK

TOLERANCES, UNLESS NOTED

0" - 12" = +/- 1/4"  
12" - 36" = +/- 3/8"  
36" - 120" = +/- 1/2"  
> 120" = +/- 1"

AUTHORIZED BY:

DATE



# SUMMIT ENTERPRISE CONSOLE

## EXTERIOR DIMENSIONS



78 John Glenn Drive  
Amherst, New York 14228  
(716) 691-8300

**CUSTOMER NAME**

INRACKS

**PROJECT**

SUMMIT ENTERPRISE

**DESCRIPTION**

SHOWN IN DRAWING  
48W SUMMIT ENTERPRISE CONSOLE

**DRAWN BY:** M McILROY | 11/24/2014

**SCALE** -

**SUMMIT ENTERPRISE  
EXTERIOR DIMENSIONS**

**GENERAL NOTES**

THE INFORMATION CONTAINED IN THIS DRAWING IS THE SOLE PROPERTY OF INRACKS INC. ANY REPRODUCTION IN PART OR AS A WHOLE WITHOUT THE WRITTEN PERMISSION OF INRACKS INC. IS PROHIBITED.

ALL DIMENSIONS ARE IN INCHES

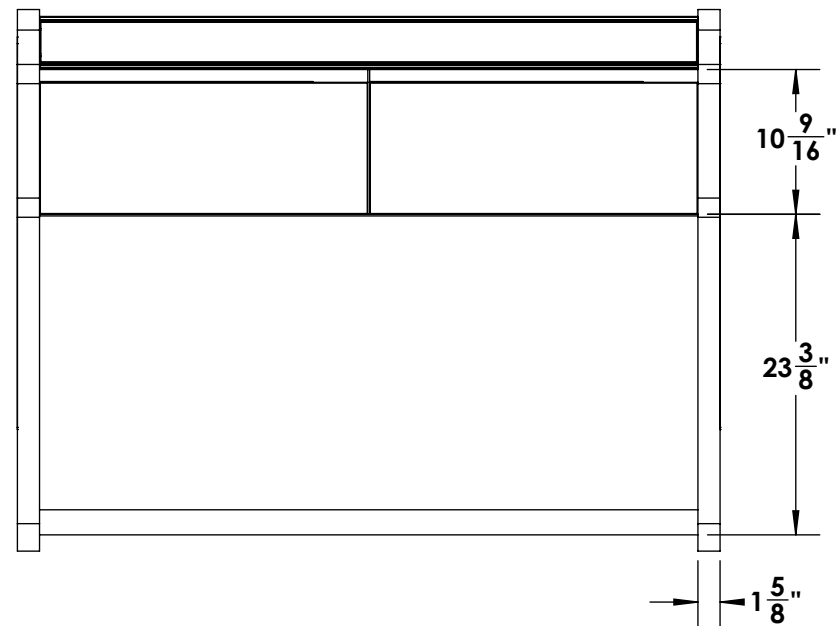
ANY QUESTIONS PLEASE ASK

TOLERANCES, UNLESS NOTED

0" - 12" = +/- 1/4"  
12" - 36" = +/- 3/8"  
36" - 120" = +/- 1/2"  
> 120" = +/- 1"

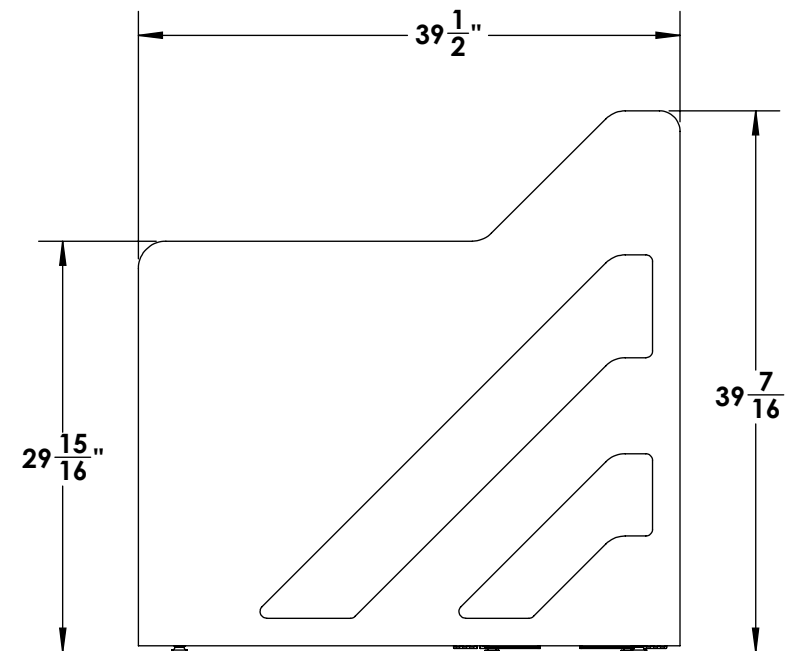
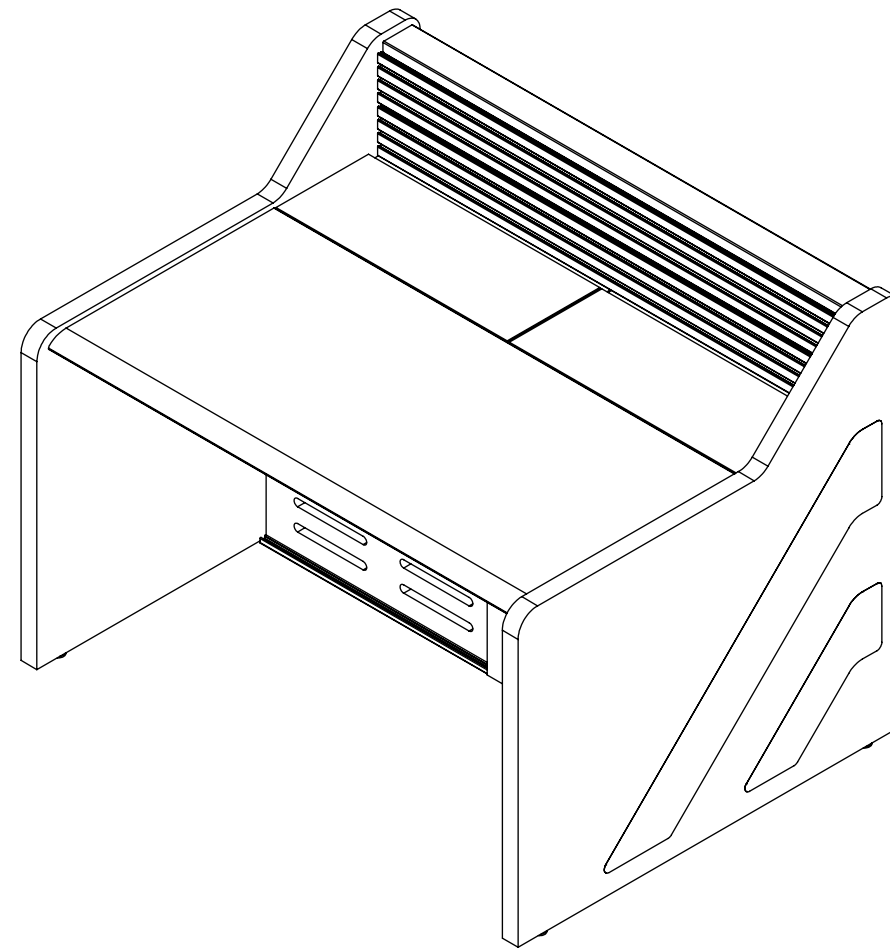
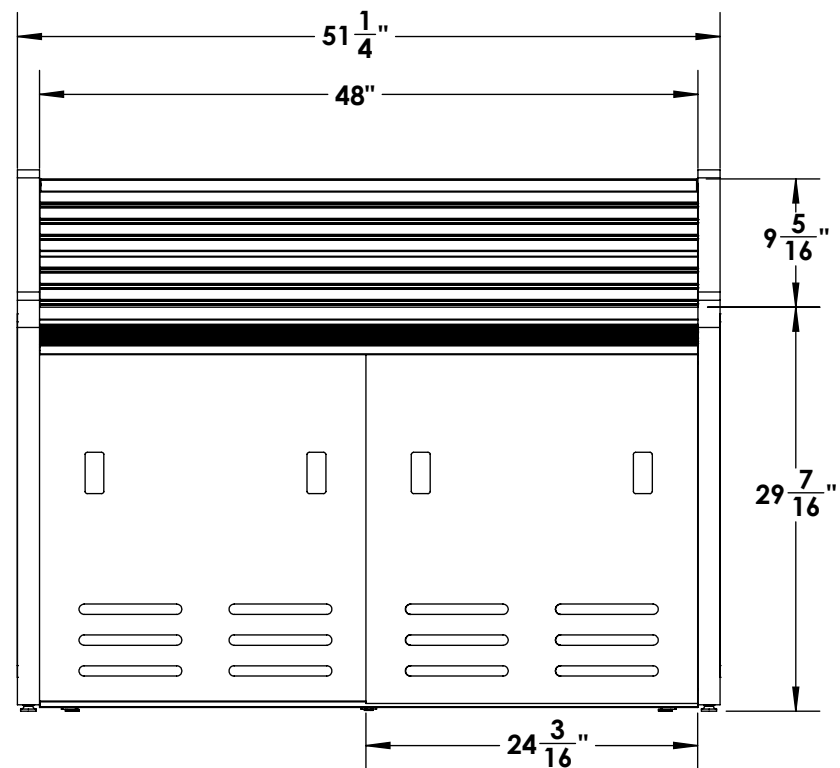
AUTHORIZED BY:

DATE



**48" WIDE CONSOLE SHOW**

STANDARD CONSOLE WIDTHS ARE 24" - 36" - 48" - 60" - 72"



# SUMMIT ENTERPRISE CONSOLE

## INTERIOR DIMENSIONS



78 John Glenn Drive  
Amherst, New York 14228  
(716) 691-8300

**CUSTOMER NAME**

INRACKS

**PROJECT**

SUMMIT ENTERPRISE

**DESCRIPTION**

SHOWN IN DRAWING  
48W SUMMIT ENTERPRISE CONSOLE

**DRAWN BY:** M McILROY | 11/24/2014  
**SCALE** -

### SUMMIT ENTERPRISE INTERIOR DIMENSIONS

#### GENERAL NOTES

THE INFORMATION CONTAINED IN THIS DRAWING IS THE SOLE PROPERTY OF INRACKS INC. ANY REPRODUCTION IN PART OR AS A WHOLE WITHOUT THE WRITTEN PERMISSION OF INRACKS INC. IS PROHIBITED.

ALL DIMENSIONS ARE IN INCHES

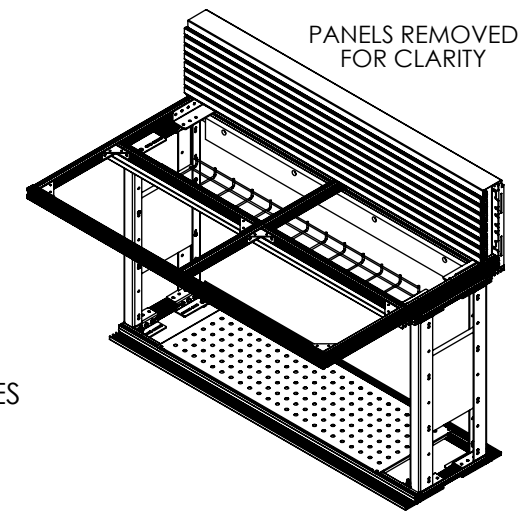
ANY QUESTIONS PLEASE ASK

TOLERANCES, UNLESS NOTED

0" - 12" = +/- 1/4"  
12" - 36" = +/- 3/8"  
36" - 120" = +/- 1/2"  
> 120" = +/- 1"

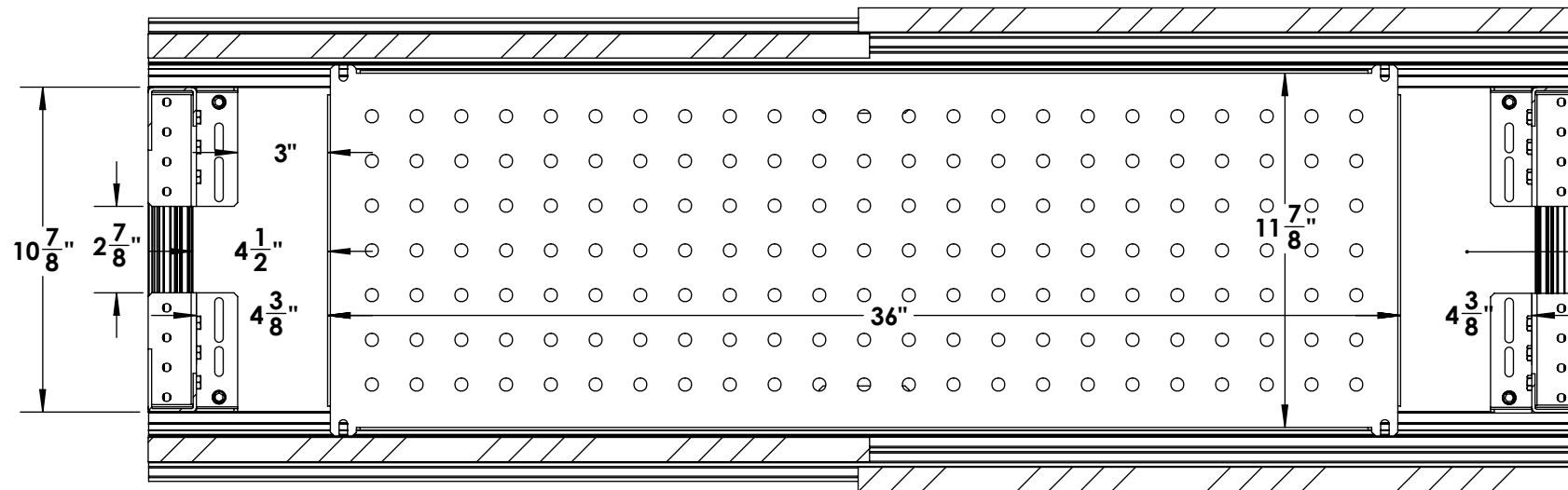
AUTHORIZED BY:

DATE



PANELS REMOVED FOR CLARITY

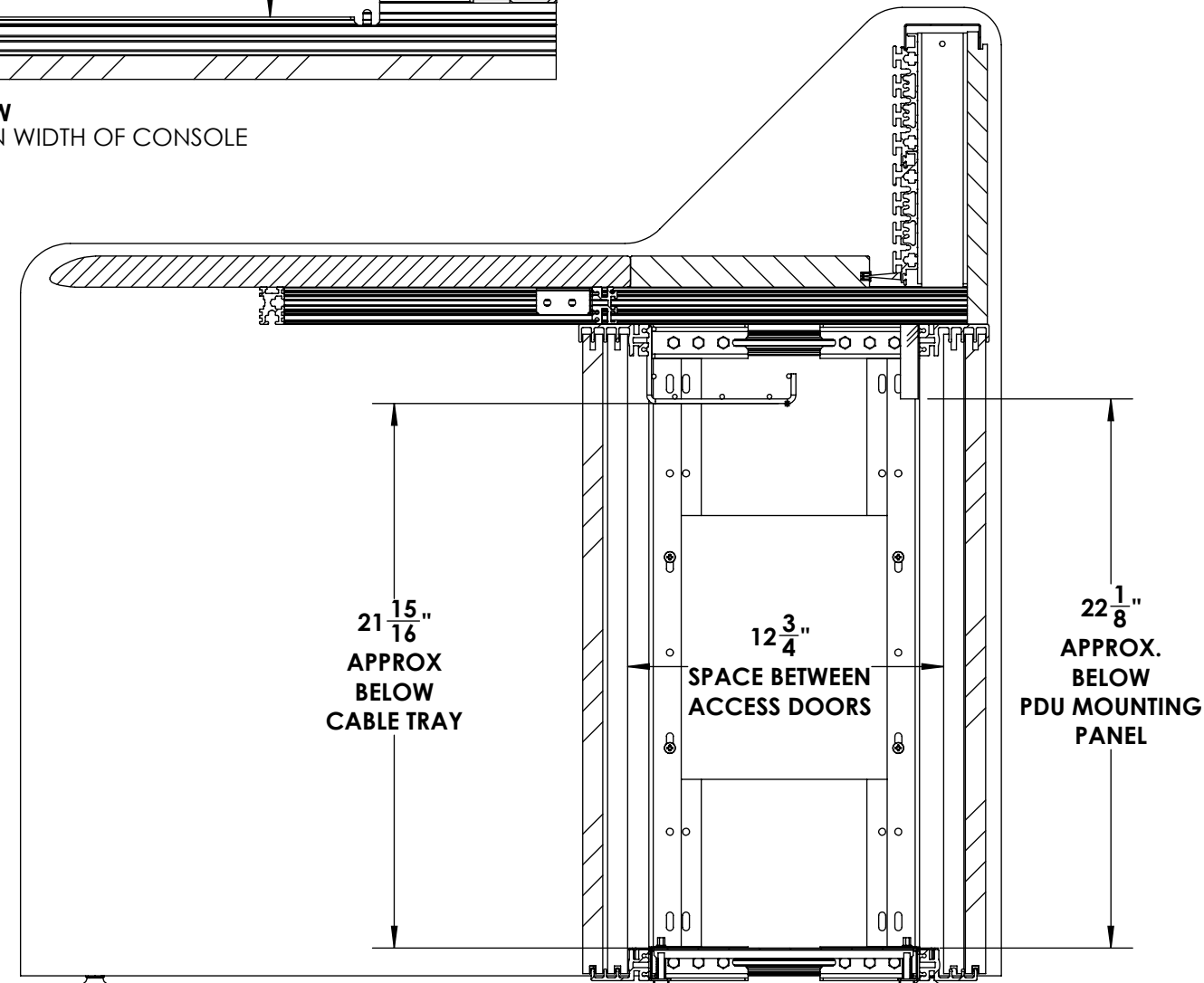
**TOP VIEW**  
SECTION A-A  
SECTION SHOWS SHELF WIDTH AND SPACE BETWEEN LEG COMPONENTS



SPACE AT ENDS OF SHELF FOR CABLE PASS THROUGH IS THE SAME FOR ALL SIZE CONSOLES

**NOTE:** SHELF CAN BE ORIENTED OFF CENTER IF REQUIRED FOR LARGER CABLE PASS THROUGH AREAS AT THE LEFT OR RIGHT OF CONSOLE

**48" WIDE CONSOLE SHOW**  
WIDTH OF SHELF WILL BE 12" NARROWER THAN WIDTH OF CONSOLE



**RIGHT SIDE VIEW**  
SECTION B-B  
SHOWS SPACE BETWEEN DOORS AND VERTICAL SPACE BETWEEN SHELF AND VERTICAL COMPONENTS OF FRAME BELOW THE WORK SURFACE  
SCALE 1 : 7

