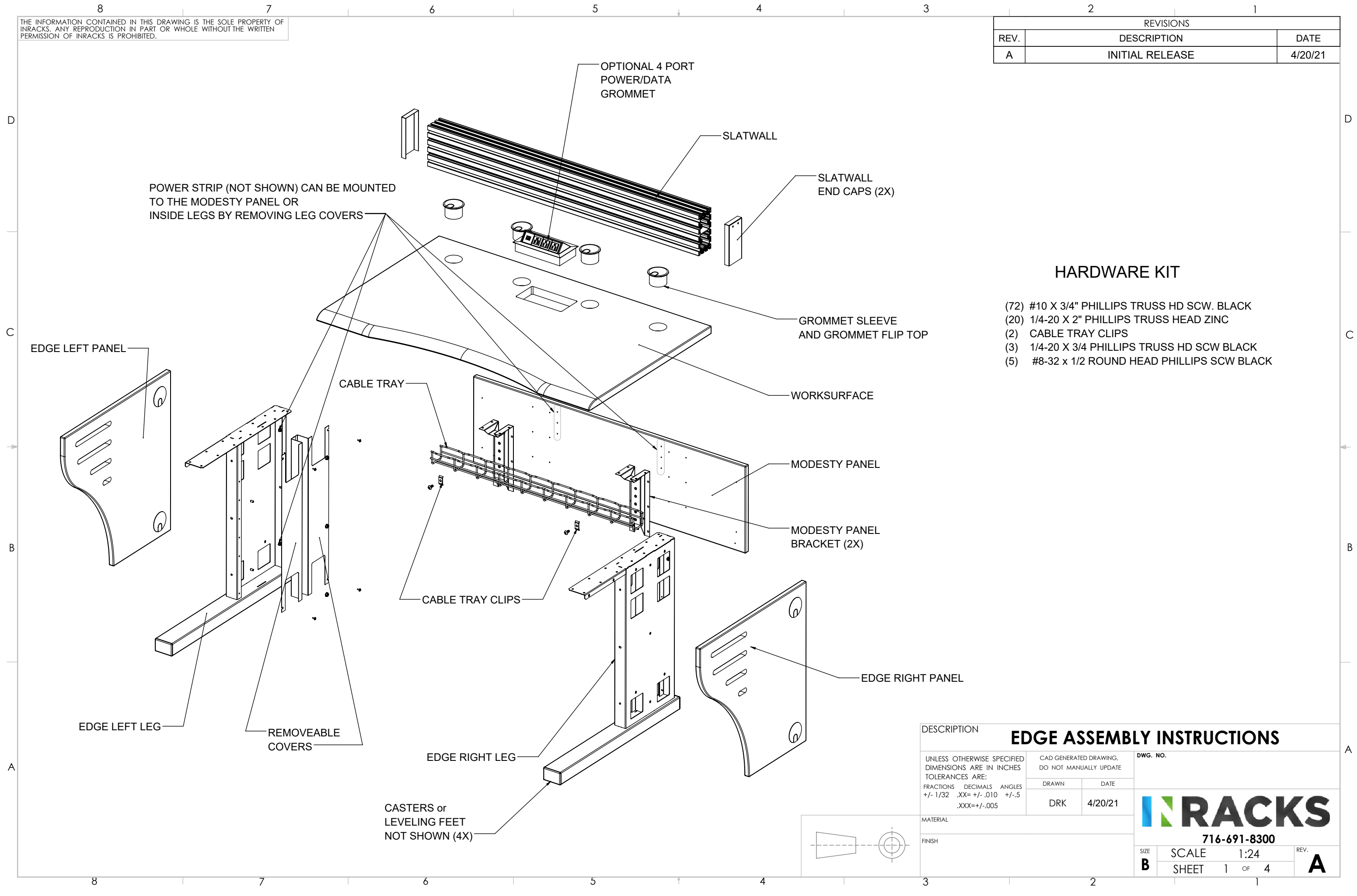



THE INFORMATION CONTAINED IN THIS DRAWING IS THE SOLE PROPERTY OF INRACKS. ANY REPRODUCTION IN PART OR WHOLE WITHOUT THE WRITTEN PERMISSION OF INRACKS IS PROHIBITED.

REVISIONS		
REV.	DESCRIPTION	DATE
A	INITIAL RELEASE	4/20/21



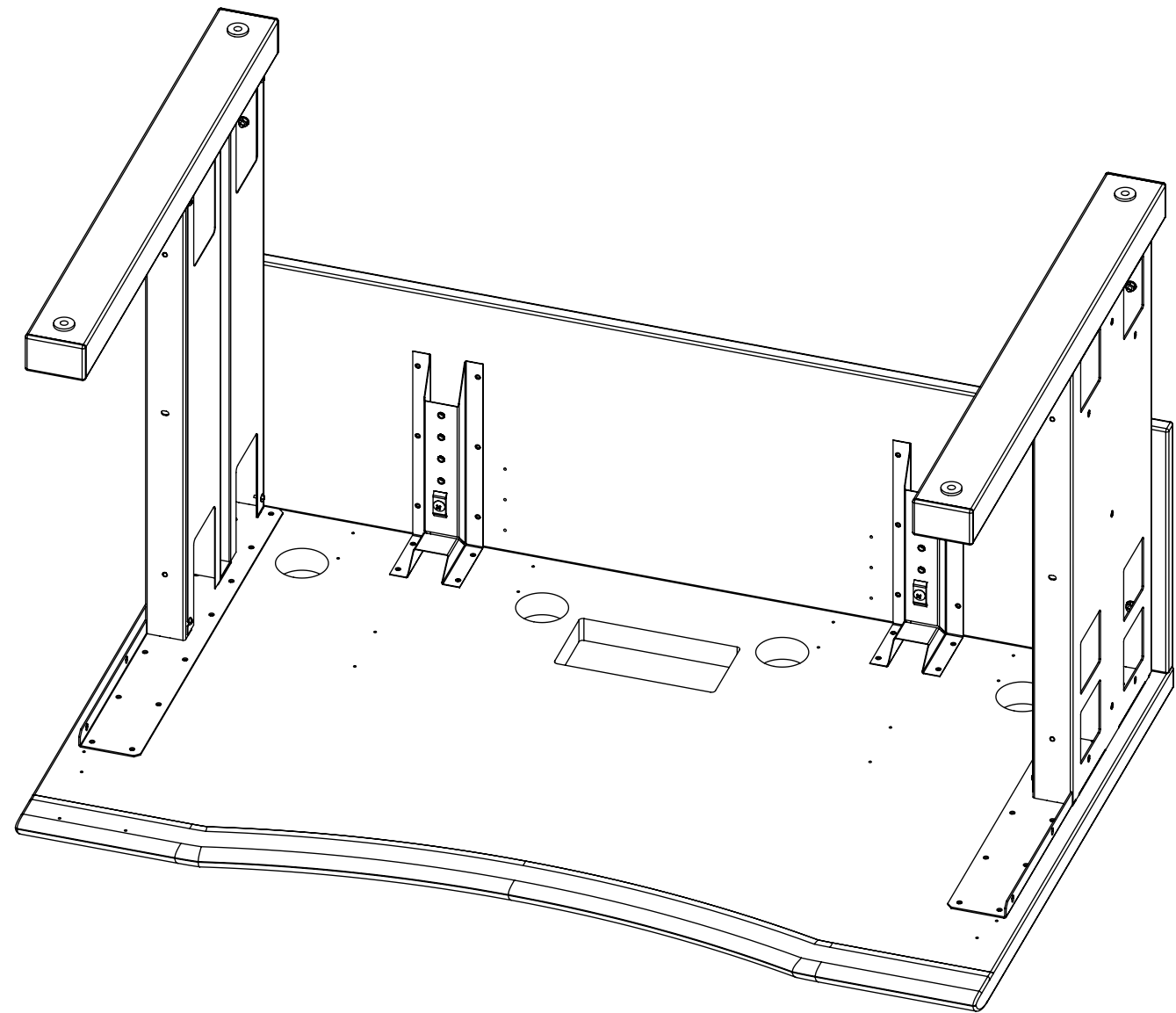
HARDWARE KIT

- (72) #10 X 3/4" PHILLIPS TRUSS HD SCW. BLACK
- (20) 1/4-20 X 2" PHILLIPS TRUSS HEAD ZINC
- (2) CABLE TRAY CLIPS
- (3) 1/4-20 X 3/4 PHILLIPS TRUSS HD SCW BLACK
- (5) #8-32 x 1/2 ROUND HEAD PHILLIPS SCW BLACK

DESCRIPTION				EDGE ASSEMBLY INSTRUCTIONS	
UNLESS OTHERWISE SPECIFIED DIMENSIONS ARE IN INCHES TOLERANCES ARE:		CAD GENERATED DRAWING, DO NOT MANUALLY UPDATE		DWG. NO.	
FRACTIONS	DECIMALS	ANGLES	DRAWN	DATE	
+/- 1/32	.XX= +/- .010	+/- .5	DRK	4/20/21	
MATERIAL					
FINISH					
					
				716-691-8300	
SIZE	SCALE	1:24	REV.		
B	SHEET	1 OF 4	A		

THE INFORMATION CONTAINED IN THIS DRAWING IS THE SOLE PROPERTY OF INRACKS. ANY REPRODUCTION IN PART OR WHOLE WITHOUT THE WRITTEN PERMISSION OF INRACKS IS PROHIBITED.

REVISIONS		
REV.	DESCRIPTION	DATE
A	INITIAL RELEASE	4/20/21



STEP 1

PLACE WORKSURFACE UPSIDE DOWN ON A CLEAN PROTECTIVE SURFACE SUCH AS CARDBOARD OR CARPET.

STEP 2

ALIGN RIGHT AND LEFT LEG HOLES WITH PRE-DRILLED HOLES ON WORKSURFACE. AND AFFIX USING (28) #10 X 3/4 TRUSS HEAD SCWS.

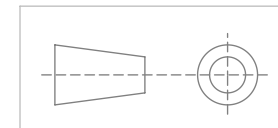
STEP 3

ALIGN MODESTY BRACKET HOLES WITH PRE-DRILLED HOLES ON MODESTY PANEL AND WORKSURFACE. AND AFFIX USING (20) #10 X 3/4 TRUSS HEAD SCWS.

STEP 4

SCREW (4) CASTERS OR LEVELING FEET (NOT SHOWN) INTO 3/8-16 HOLES ON LEG BOTTOM

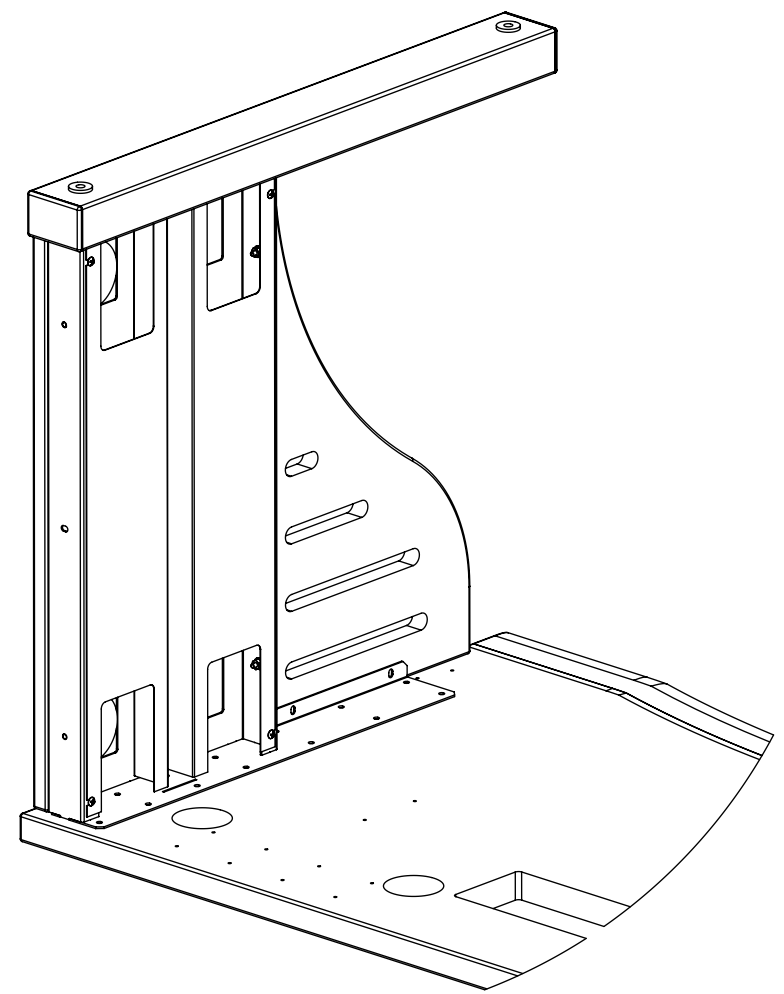
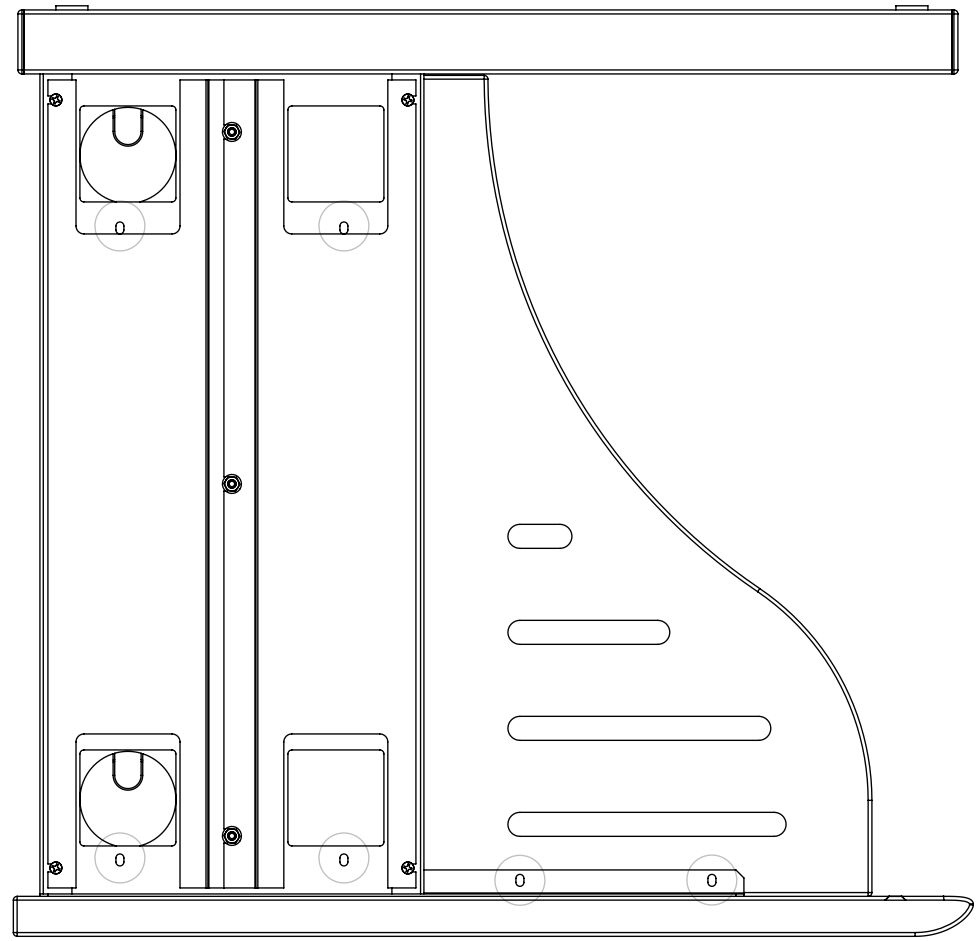
DESCRIPTION		EDGE ASSEMBLY INSTRUCTIONS		DWG. NO.
UNLESS OTHERWISE SPECIFIED DIMENSIONS ARE IN INCHES TOLERANCES ARE:		CAD GENERATED DRAWING, DO NOT MANUALLY UPDATE		
FRACTIONS	DECIMALS	ANGLES	DRAWN	DATE
+/- 1/32	.XX= +/- .010	+/- .5	DRK	4/20/21
	.XXX= +/- .005			
MATERIAL				
FINISH				
				REV. A
		716-691-8300		
SIZE B	SCALE 1:16	SHEET 2 OF 4		



8 7 6 5 4 3 2 1

THE INFORMATION CONTAINED IN THIS DRAWING IS THE SOLE PROPERTY OF INRACKS. ANY REPRODUCTION IN PART OR WHOLE WITHOUT THE WRITTEN PERMISSION OF INRACKS IS PROHIBITED.

REVISIONS		
REV.	DESCRIPTION	DATE
A	INITIAL RELEASE	4/20/21



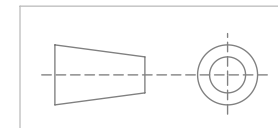
STEP 5

ALIGN SIDE PANEL HOLES WITH LEG SLOTS AND AFFIX USING (6 EACH LEG) #10 X 3/4 PHILLIPS TRUSS HEAD SCREWS

STEP 6

CAREFULLY FLIP ASSEMBLY AND LOCK CASTERS (IF APPLICABLE). MOVE ONTO STEP 7.

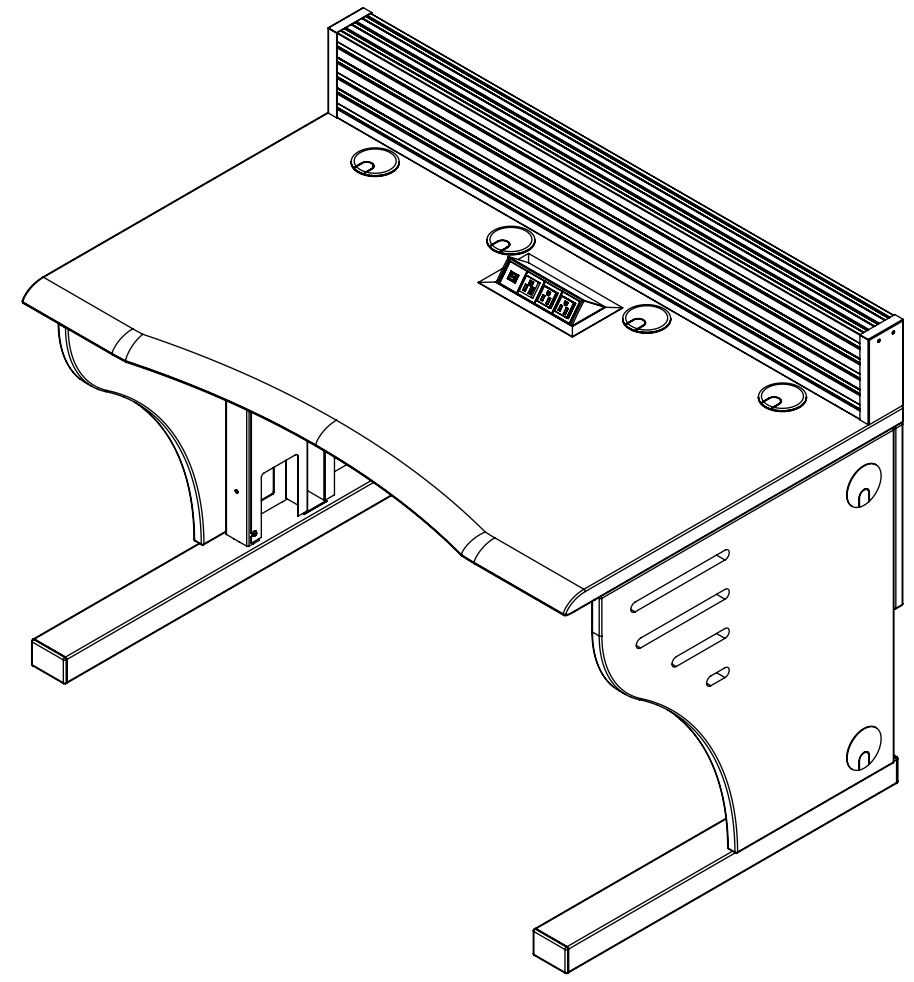
DESCRIPTION		EDGE ASSEMBLY INSTRUCTIONS		DWG. NO.
UNLESS OTHERWISE SPECIFIED DIMENSIONS ARE IN INCHES TOLERANCES ARE:		CAD GENERATED DRAWING, DO NOT MANUALLY UPDATE		
FRACTIONS	DECIMALS	ANGLES	DRAWN	DATE
+/- 1/32	.XX= +/- .010	+/- .5	DRK	4/20/21
	.XXX= +/- .005			
MATERIAL		FINISH		
SIZE	SCALE	1:12	REV.	
B	SHEET	3 OF 4	A	



8 7 6 5 4 3 2 1

THE INFORMATION CONTAINED IN THIS DRAWING IS THE SOLE PROPERTY OF INRACKS. ANY REPRODUCTION IN PART OR WHOLE WITHOUT THE WRITTEN PERMISSION OF INRACKS IS PROHIBITED.

REVISIONS		
REV.	DESCRIPTION	DATE
A	INITIAL RELEASE	4/20/21



STEP 7

PLACE SLATWALL ON WORKSURFACE AND, FROM UNDERSIDE OF WORKSURFACE, AFFIX THE SLATWALL USING (8) 1/4-20 X 2" ZINC SCREWS THROUGH PRE-DRILLED HOLES IN WORKSURFACE.

STEP 8

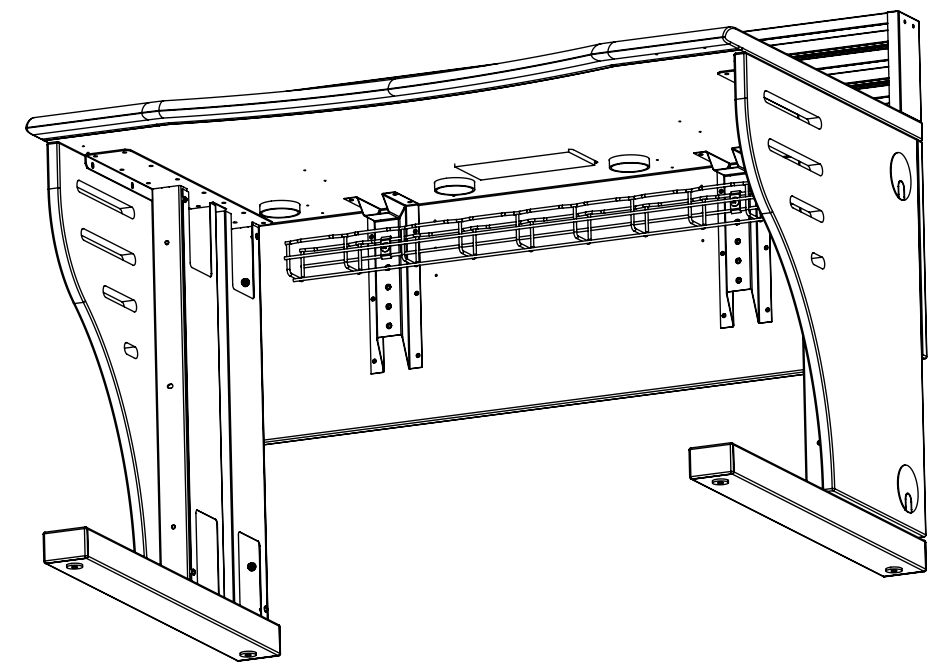
ATTACH CABLE TRAY TO MODESTY PANEL BRACKETS USING (2) CABLE TRAY CLIPS AND (2) 1/4-20 X 3/4 TRUSS HEAD SCREWS.

STEP 9

ATTACH SLATWALL END CAPS USING (2 EACH) #8-32 ROUND HEAD PHILLIPS SCREWS.

STEP 10

INSERT GROMMETS

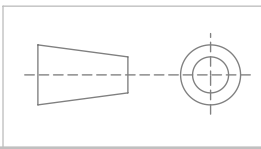


EDGE ASSEMBLY INSTRUCTIONS

UNLESS OTHERWISE SPECIFIED DIMENSIONS ARE IN INCHES TOLERANCES ARE:
 FRACTIONS DECIMALS ANGLES
 +/- 1/32 .XX= +/- .010 +/- .5
 .XXX= +/- .005

CAD GENERATED DRAWING, DO NOT MANUALLY UPDATE
 DRAWN DATE
 DRK 4/20/21

DWG. NO.
INRACKS
 716-691-8300



MATERIAL
 FINISH

SIZE SCALE REV.
B 1:16 **A**
 SHEET 4 OF 4